

Mula (L)

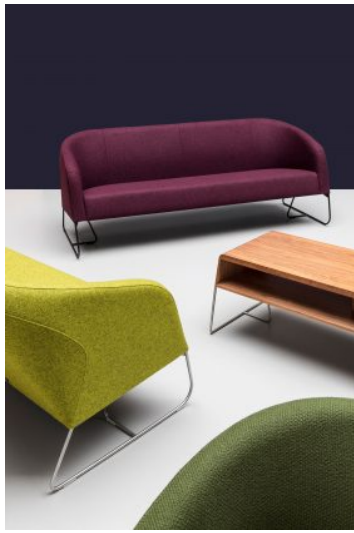
The elegant form and carefully prepared details combined with comfort of use emphasize the timeless beauty of the furniture. The collection refers to the trends of the 60s in terms of its design. Thanks to the possibility of choosing the legs (stainless steel, painted metal and wooden legs), MULA sofas, armchairs and pouffes may be placed in both modern and classic interiors.

IMAGES



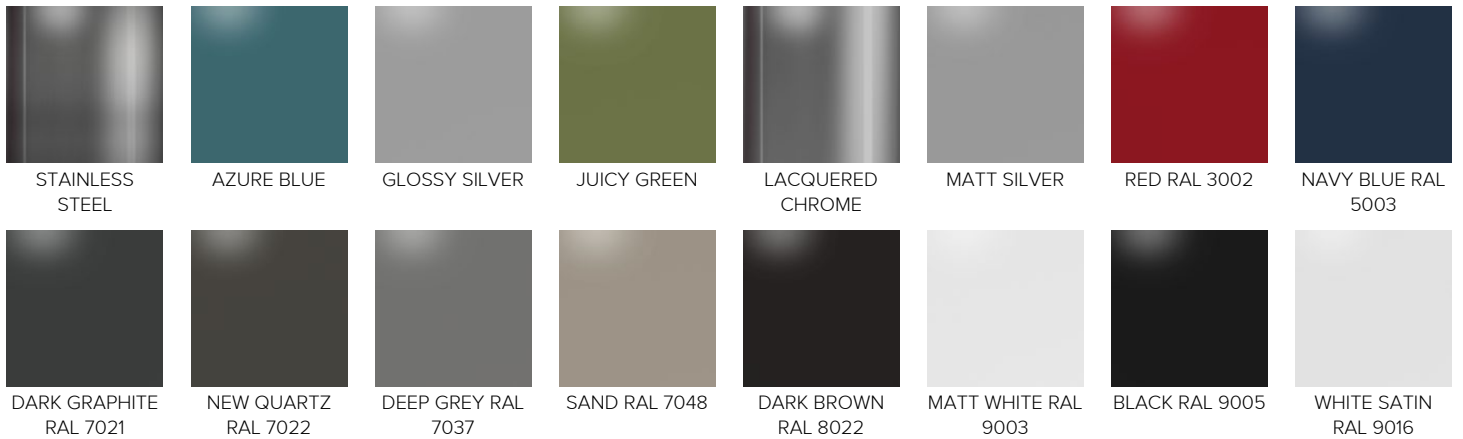
Piotr Kuchcinski
Designer of Clapp, Mishell, Mula by Noti





FINISHES

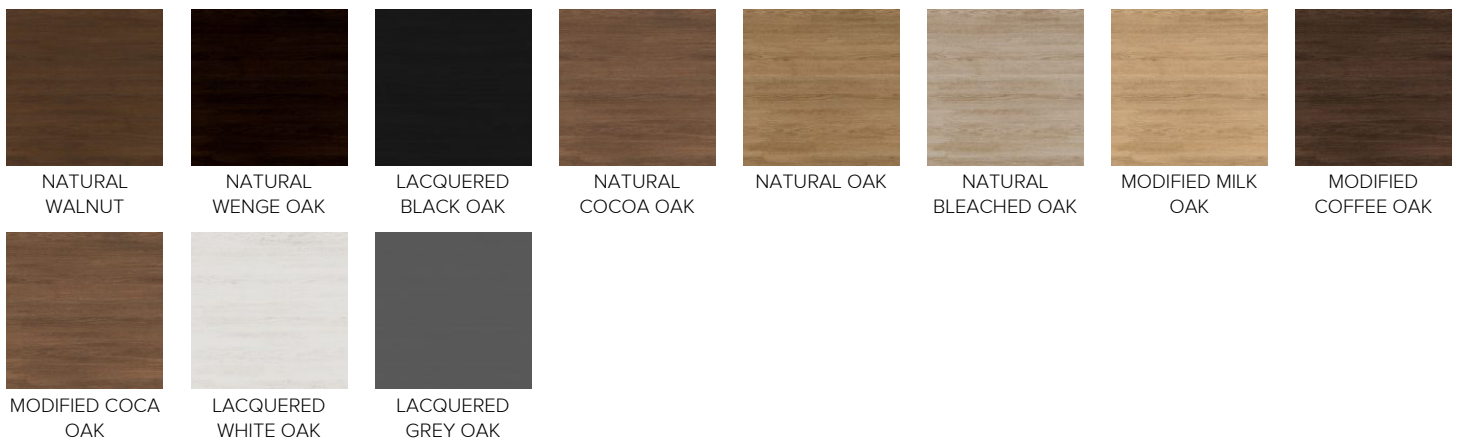
Metal Finishes



Wooden Leg Colours



Veneer Table Finishes



Medley

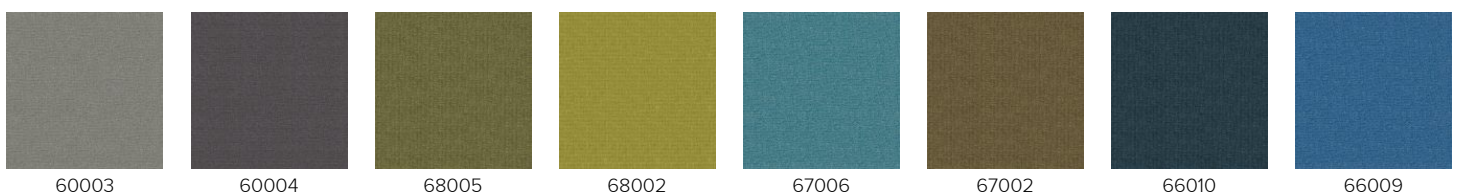
Medley is woven in 100% polyester melange yarn with a simple, geometric structure. The tight texture and changing structure of the yarn give the fabric an intense colour depth and a lively surface in multiple shades. The weave structure accentuates the richness of every single nuance and creates a discreet colour play across the fabric's surface. Nuances fuse gently and with varying saturation and intensity, depending on the incident angle of the light.

Martindale: 75,000

Fire Rating: EN 1021 1&2 BS 5852, Crib 5 Calif.Bull.117E UNI, 9175 Class 2.IM AM18-NF D 60-013, IMO A.652 (16), IMO/MED Certificate

Weight: 510g/lin. m

Material: 100% Polyester





Remix 2

Remix is a woollen upholstery fabric, created by the acclaimed Italian designer Giulio Ridolfo. Remix is made from melange yarns, with each thread consisting of three different colours. For each colourway, two different threads are used. The result is irregular colours playing across the surface of the fabric. It is available in many colours, ranging from burnt reds and oranges, dusty blues and greens and subtle charcoal tones to natural shades of yellow, beige and sand.

Martindale: 100,000

Fire Rating: EN 1021 1/2 ignition source 0-1. BS 5852 ignition source 2-3, Önorm B1/Q1 NF D 60-013, UNI 9175 1 IM, US Cal.Tech.Bull 117 AS/NZ 3837, Class 2.IMO A.652(16), Crib 5 & B2 when flame protected

Weight: 415 g/lin. m

Material: 90% Wool, 10% Nylon



Step & Step Melange

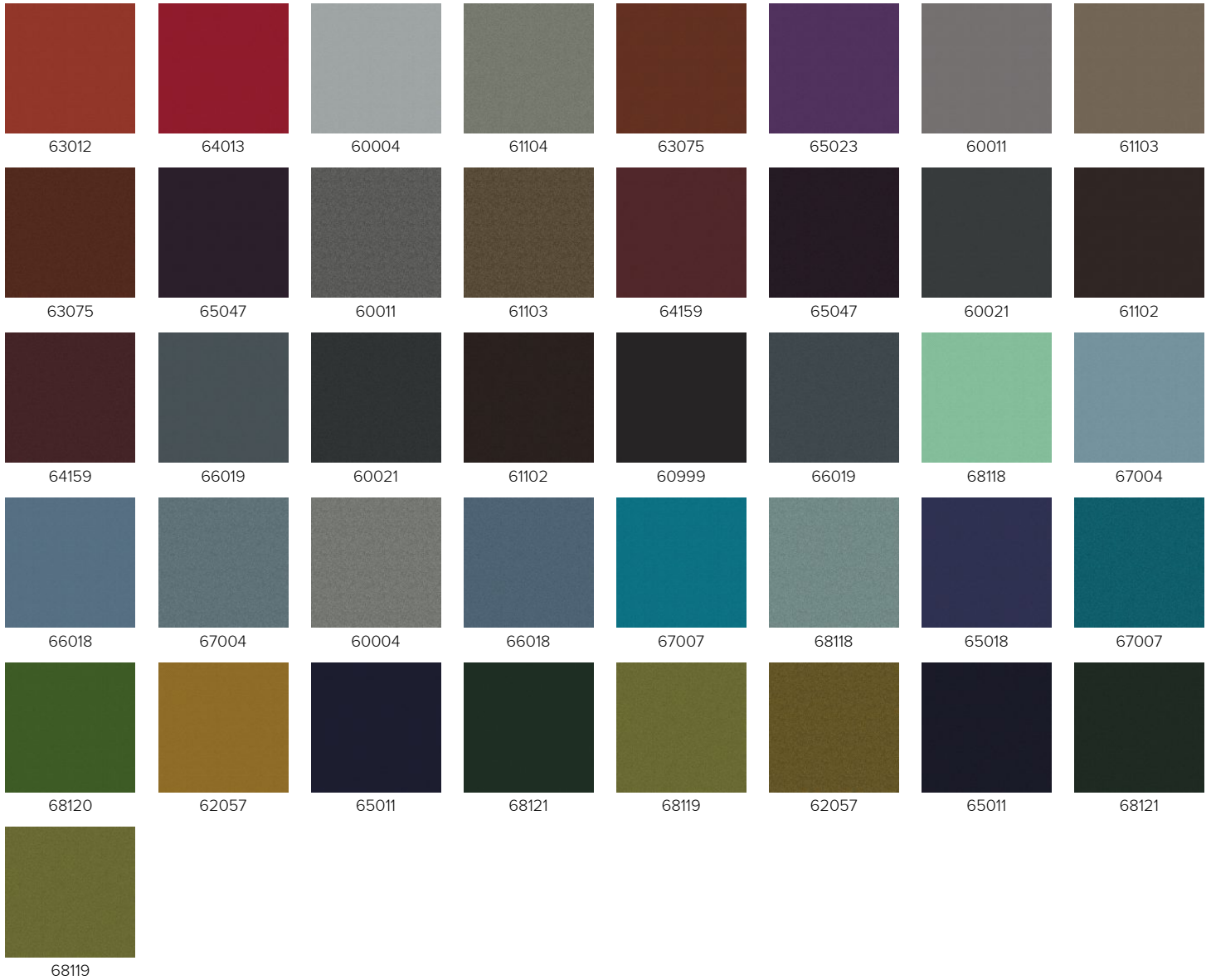
Step is unique in both texture and performance. With its delicate surface, Step is perceived as vivid and interesting. The texture with the fire-resistant Trevira CS yarn ensures that the fabric is suited for use in environments with high fire safety and durability requirements. The uni-coloured Step has a counterpart in the heathered Step Melange, and when they're used in an integrated upholstery, it's a good idea to use Step Melange in exposed areas where the mottled expression of the fabric will have an automatically masking effect. With its pure nuances, Step is an eye catcher and adds a sculptural effect to the upholstery.

Martindale: 100,000

Fire Rating: EN 1021 1&2, BS 5852 crib 5, FAR/JAR 25853, DIN 4102;B1 NFP 92-503;M1, BS 7176 Med.Hazard, IMK Res.A652 (16) MED Certificated IMO, UNI 9175 class 1/EMME, Calif.Tech.Bull. 117, Önorm 3825 B1/Q1, BS 5852 P1 O&1, AM 18- NF D 60-013

Weight: 470 g/lin. m

Material: 100% Trevira



Blazer

Blazer is a classic pure new wool upholstery fabric with a billiard cloth felted finish. The fabric is made from premium New Zealand lambswool and benefits from complete integrity right from individual sheep farms to the finished fabric.

Martindale: 50,000

Fire Rating: BS EN 1021 – 1:2006 (cigarette), BS EN 1021 – 2:2006 (match), BS 7176:2007 Low Hazard, UNI 9175 Classe 1 IM

Weight: 460 g/m2

Material: 100% Wool



FAIRFIELD CUZ47	WESLEY CUZ82	DUNHURST CUZ58	DURHAM CUZ14	DOLLAR CUZ84	BUTTERSTONE CUZ83	KEIL CUZ85	ST ANDREWS CUZ86
							
ABERDEEN CUZ87	STARLEY CUZ88	GOLDSMITH CUZ39	TRAVELAN CUZ31	ROCKPORT CUZ89	EDGE HILL CUZ90	ORIEL CUZ18	KINGSMEAD CUZ67
							
MAGDALENE CUZ21	HANDCROSS CUZ63	CITY CUZ1A	IMPERIAL CUZ1B	WELLINGTON CUZ13	KIMBOLTON CUZ66	SILVERDALE CUZ28	LANCASTER CUZ1C
							
BATH CUZ1D	ULSTER CUZ1F	LATYMER CUZ33	SALFORD CUZ1G	BRYANSTON CUZ53	BELHAVEN CUZ1H	ASTON CUZ02	ABERLOUR CUZ1J
							
CAMPHILL CUZ1K	NEWPORT CUZ1L	KNIGHTSBRIDGE CUZ26	SILCOATES CUZ30	GLASGOW CUZ1M	CARDIFF CUZ1N	HULL CUZ1P	WINCHESTER CUZ12
							
PLYMOUTH CUZ1R	NOTTINGHAM CUZ1S	BRIGHTON CUZ1Q	SHEFFIELD CUZ1T	SUSSEX CUZ1U	MANCHESTER CUZ1V	NEWCASTLE CUZ1W	ST MARTINS CUZ1X
							
BALLIOL CUZ24	EDINBURGH CUZ1Y	EXETER CUZ1Z	OXFORD CUZ09	COLLINGWOOD CUZ27	LOUGHBOROUGH CUZ2A	EASTBOURNE CUZ46	NAPIER CUZ08
							
GLENALMOND CUZ62	BROMSGROVE CUZ35	BAMBRIDGE CUZ32	SURREY CUZ1E				
							

Hallingdal 65

Kvadrat's first textile 'Hallingdal' has become the archetype of woollen textiles. The very durable upholstery fabric was originally designed in 1965 by Nanna Ditzel, and is now available in a version with an updated colour scale: Hallingdal 65. Hallingdal 65 is made of wool and viscose, which complement each other well: the wool provides excellent durability and flexibility, whilst the viscose adds brilliance and depth to the colour. Both materials are dyed before they are spun, which highlights the rich texture of the fabric.

Martindale: 100,000

Fire Rating: EN 1021-1/2, ignition source 2-5, DIN 4102 B2, Önorm B1/Q1, UNI 9175/UNI 9176, 11M, US Cal.Tech.Bull. 117, IMO A.652(16), M2 when flame protected

Weight: 795 g/lin. m

Material: 70% Wool, 30% Viscose



Raw

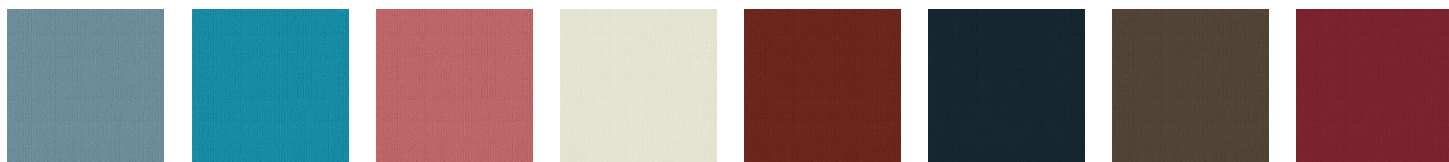
Raw is a gorgeous rustic wool bouclé with natural properties of wool, which expresses warmth and softness. The color scale is inspired of the Swedish nature with its Northern light, forests and landscapes of ice and water. Raw creates a new strong expression, which enhances the public environment and gives furniture a lot of character. Available in 24 colors.

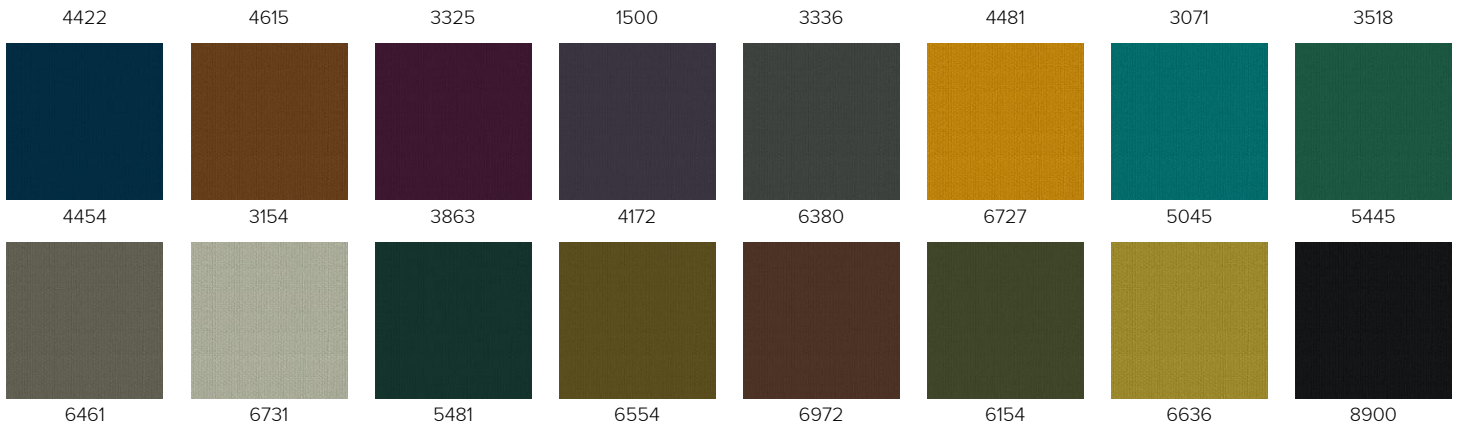
Martindale: 100,000

Fire Rating: BS EN 1021 1&2 BS 5852, Crib 5 Calif.Bull. 117E UNI, 9175 Class 2.IM AM 18 – NF D 60-013 BS 5852 Part 1 0,1 (cigarette & match), IMO A.652 (16), MED Certificate IMO

Weight: 720 g/lin. m

Material: 86% Wool, 14% Polyamide





Samoa

Thickness: 1,2-1,4 mm

Material: Natural Corrected Leather



Steelcut Trio 2

Steelcut Trio 2 is a hardwearing upholstery textile, which has the same construction as Steelcut 2. Designed by Frans Dijkmeijer and coloured by Giulio Ridolfo, it is now available in a wider choice of colours. Like Steelcut 2, Steelcut Trio 2 features an innovative weave, which gives the fabric a three-dimensional surface resembling small pyramids or steel points and, despite the complexity of the weave, a simple and precise expression.

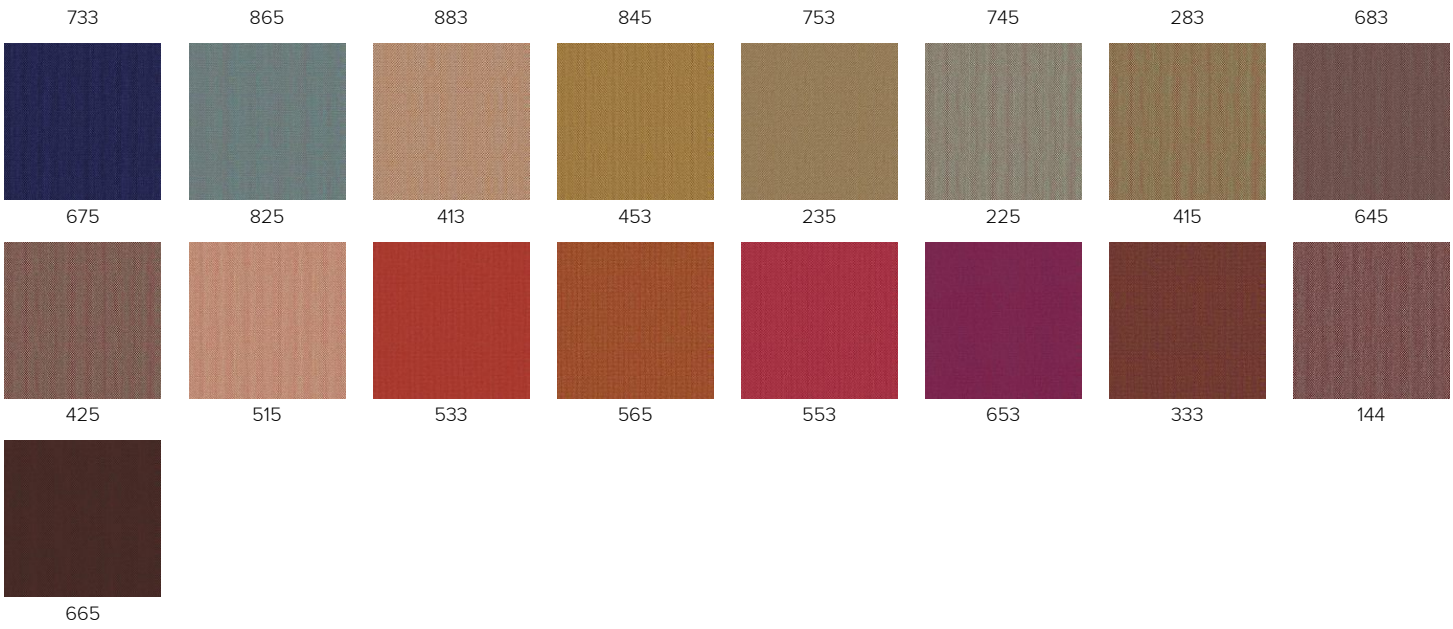
Martindale: 80,000

Fire Rating: EN 1021-1/2, ignition source 0-1, BS 5852 ignition source 2-3, DIN 4102 B2 Önorm B1/Q1 NF D 60-013, UNI 9175 1IM, US CAL.Tech.Bull. 117 NFPA 260, AS/NZS 3837 Class 2, IMO A.652(16) Crib 5 when flame protected

Weight: 770 g/lin. m

Material: 90% Wool, 10% Nylon





CONFIGURATOR

Available variants:



Mula Armchair, Cantilever Frame



Mula Armchair, Metal Legs



Mula Armchair, Oak Legs



Mula Armchair, Round Base



Mula 2-Seat Sofa, Cantilever Frame



Mula 2-Seat Sofa, Metal Legs



Mula 2-Seat Sofa, Oak Legs



Mula 3-Seat Sofa, Cantilever Frame



Mula 3-Seat Sofa, Metal Legs



Mula 3-Seat Sofa, Oak Legs



Mula Large Pouffe, Cantilever Frame



Mula Large Pouffe, Oak Legs



Mula Small Pouffe, Cantilever Frame



Mula Small Pouffe, Oak Legs



Mula Large Table, Cantilever Frame



Mula Small Table, Cantilever Frame